

# Safety Data Sheet

## 1. IDENTIFICATION OF THE SUBSTANCE/MIXTURE AND OF THE COMPANY/UNDERTAKING

### 1.1 Product Identifier

Chemical Name Naftopidil

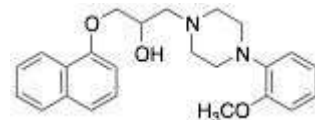
Catalogue # N213501

### 1.2 Relevant Identified Uses of the Substance or Mixture and Uses Advised Against

Product Uses To be used only for scientific research and development. Not for use in humans or animals.

### 1.3 Details of the Supplier of the Safety Data Sheet

Company Will be updated as per company.



### 1.4 Emergency Telephone Number

Emergency# Will be updated as per company.

## 2. HAZARDS IDENTIFICATION

### 2.1/2.2 Classification of the Substance or Mixture and Label Elements

#### GHS Hazards Classification (According to EU Regulation 1272/2008 and US OSHA 1910.1200)

Not a hazardous substance by GHS.

#### GHS Hazards Identification (According to EU Regulation 1272/2008 and US OSHA 1910.1200)

Signal Word None

#### GHS Hazard Statements

None Not a hazardous substance according to GHS.

#### GHS Precautionary Statements

### 2.3 Unclassified Hazards/Hazards Not Otherwise Classified

No data available.

## 3. COMPOSITION/INFORMATION ON INGREDIENTS

### 3.1 Substances

Molecular Formula:  $C_{24}H_{28}N_2O_3$

Molecular Weight: 392.49

CAS Registry #: 57149-07-2

EC#:

#### Synonyms

4-(2-Methoxyphenyl)- $\alpha$ -[(1-naphthalenyloxy)methyl]-1-piperazineethanol; Naftopil; (+/-)-Naftopidil;

### 3.2 Mixtures

Not a mixture.

## 4. FIRST AID MEASURES

### 4.1 Description of First Aid Measures

General Advice

If medical attention is required, show this safety data sheet to the doctor.

#### **If Inhaled**

If inhaled, move person to fresh air. If not breathing, give artificial respiration and consult a physician.

#### **In Case of Skin Contact**

Wash affected area with soap and water. Consult a physician if any exposure symptoms are observed.

#### **In Case of Eye Contact**

Immediately rinse eyes with plenty of water for at least 15 minutes. Consult a physician.

#### **If Swallowed**

Never give anything by mouth to an unconscious person. Rinse mouth with water. Do NOT induce vomiting unless advised to do so by a physician or Poison Control Center. Seek medical attention.

#### **4.2 Most Important Symptoms and Effects. Both Acute and Delayed**

The most important known symptoms and effects are described in the labeling (see section 2.2) and/or section 11.

#### **4.3 Indication of any Immediate Medical Attention and Special Treatment Needed**

No data available.

### **5. FIREFIGHTING MEASURES**

#### **5.1 Extinguishing Media**

Use water spray, alcohol-resistant foam, dry chemical or carbon dioxide.

#### **5.2 Special Hazards Arising from the Substance or Mixture**

Carbon oxides, Nitrogen oxides

#### **5.3 Advice for Firefighters**

Wear self contained breathing apparatus for fire fighting if necessary. Use personal protection equipment.

#### **5.4 Further Information**

No data available.

### **6. ACCIDENTAL RELEASE MEASURES**

#### **Personal precautions**

Wear respiratory protection. Avoid dust formation. Avoid breathing vapours, mist or gas. Ensure adequate ventilation. Evacuate personnel to safe areas. Avoid breathing dust. Avoid contact with skin, eyes or clothing.

#### **Environmental precautions**

Prevent further leakage or spillage if safe to do so. Do not let product enter drains.

#### **Method and materials for containment and cleaning up**

Pick up and arrange disposal without creating dust. Sweep up and shovel. Keep in suitable, closed containers for disposal.

### **7. HANDLING AND STORAGE**

#### **7.1 Precautions for safe handling**

Avoid contact with skin and eyes. Avoid formation of dust and aerosols. Provide appropriate exhaust ventilation at places where dust is formed.

#### **7.2 Conditions for safe storage#**

Keep container tightly closed in a dry and well-ventilated place. Keep in a dry place.

Storage conditions: -20°C

#### **7.3 Specific End Uses**

For scientific research and development only. Not for use in humans or animals.

### **8. EXPOSURE CONTROLS/PERSONAL PROTECTION**

#### **8.1 Control Parameters**

Contains no components with established occupational exposure limits.

#### **8.2 Exposure Controls**

##### **Appropriate Engineering Controls**

A laboratory fumehood or other appropriate form of local exhaust ventilation should be used to avoid exposure.

### Personal Protective Equipment

All recommendations below are advisory in nature and a risk assessment should be performed by the employer/end user prior to use of this product. The type of protective equipment must be selected based on the amount and concentration of the dangerous material being used in the workplace.

### Eye/Face Protection

Safety goggles or face shield. All equipment should have been tested and approved under appropriate standards, such as NIOSH (US), CSA (Canada), or EN 166 (EU).

### Skin Protection

Gloves should be used when handling this material. Gloves are to be inspected prior to use. Contaminated gloves are to be removed using proper glove removal technique so that the outer surface of the glove does not contact bare skin. Dispose of contaminated gloves after use in compliance with good laboratory practices and local requirements.

Gloves used for incidental exposures (splash protection) should be designated as "chemical resistant" by EU standard EN 374 with the resistance codes corresponding to the anticipated use of the material. Unrated gloves are not recommended.

Suggested gloves: AnsellPro Sol-Vex nitrile gloves style 37-175, 15 mil thickness.

Penetration time has not been determined.

Gloves used for prolonged direct exposure (immersion) should be designated "chemical resistant" as per EN 374 with the resistance codes corresponding to the anticipated use of the material.

Suggested gloves: AnsellPro Viton/Butyl gloves style 38-612, 4/8 mil thickness.

Penetration time has not been determined.

These recommendations may not apply if the material is mixed with any other chemical, or dissolved into a solution. A risk assessment must be performed to ensure the gloves will still offer acceptable protection.

### Body Protection

Fire resistant (Nomex) lab coat or coveralls.

### Respiratory Protection

Recommended respirators are NIOSH-approved N100 or CEN-approved FFP3 particulate respirators. These are to be only used as a backup to local exhaust ventilation or other engineering controls. If the respirator is the only means of protection, a full-face supplied air respirator must be used.

## 9. PHYSICAL AND CHEMICAL PROPERTIES

### 9.1 Information on Basic Physical and Chemical Properties

#### A) Appearance

White to Off-White Solid

#### B) Odour

No data available

#### C) Odour Threshold

No data available

#### D) pH

No data available

#### E) Melting Point/Freezing Point

125-126°C

#### F) Initial Boiling Point/Boiling Range

No data available

#### G) Flash point

No data available

#### H) Evaporation Rate

No data available

#### I) Flammability (Solid/Gas)

No data available

#### J) Upper/Lower Flammability/Explosive Limits

No data available

#### K) Vapour Pressure

No data available

#### L) Vapour Density

No data available

#### M) Relative Density

No data available

#### N) Solubility

Dichloromethane, DMSO (Sparingly), Methanol (Slightly, Heated)

#### O) Partition Coefficient: n-octanol/water

No data available

#### P) Auto-Ignition Temperature

No data available

#### Q) Decomposition Temperature

No data available

#### R) Viscosity

No data available

#### S) Explosive Properties

No data available

#### T) Oxidizing Properties

No data available

### 9.2 Other Information

no data available

## 10. STABILITY AND REACTIVITY

### 10.1 Reactivity

No data available.

#### **10.2Chemical Stability**

Stable under recommended storage conditions.

#### **10.3Possibility of Hazardous Reactions**

No data available.

#### **10.4Conditions to Avoid**

No data available.

#### **10.5Incompatible Materials**

Strong oxidizing agents.

#### **10.6Hazardous Decomposition Products**

In the event of fire: See section 5. Other decomposition products: No data available.

### **11. TOXICOLOGICAL INFORMATION**

#### **11.1 Information on Toxicological Effects**

##### **A) Acute Toxicity**

Oral LD50: No data available.

Inhalation LC50: No data available.

Dermal LD50: No data available.

##### **B) Skin Corrosion/Irritation**

No data available

##### **C) Serious Eye Damage/Irritation**

No data available

##### **D) Respiratory or Skin Sensitization**

No data available

##### **E) Germ Cell Mutagenicity**

No data available

##### **F) Carcinogenicity**

No data available

##### **G) Reproductive Toxicity/Teratogenicity**

No data available

##### **H) Single Target Organ Toxicity - Single Exposure**

No data available

##### **I) Single Target Organ Toxicity - Repeated Exposure**

No data available

##### **J) Aspiration Hazard**

No data available

##### **K) Potential Health Effects and Routes of Exposure**

###### **Inhalation**

May be harmful if inhaled. May cause respiratory tract irritation.

###### **Ingestion**

May be harmful if swallowed.

###### **Skin**

May be harmful if absorbed through skin. May cause skin irritation.

###### **Eyes**

May cause eye irritation.

##### **L) Signs and Symptoms of Exposure**

The most important known symptoms and effects are described in the labeling (see section 2.2) and/or section 11.

To the best of our knowledge, the chemical, physical, and toxicological properties of this material have not been thoroughly investigated.

##### **M) Additional Information**

RTECS: TL9336500

### **12. ECOLOGICAL INFORMATION**

#### **12.1 Toxicity**

No data available.

#### **12.2 Persistence and Degradability**

No data available.

#### **12.3 Bioaccumulative Potential**

No data available.

#### 12.4 Mobility in Soil

No data available.

#### 12.5 Results of PBT and vPvB Assessment

No data available.

#### 12.6 Other Adverse Effects

No data available.

### **13. DISPOSAL CONSIDERATIONS**

#### 13.1 Waste Treatment Methods

##### A) Product

Product may be burned in an incinerator equipped with afterburner and scrubber. Excess and expired materials are to be offered to a licensed hazardous material disposal company. Ensure that all Federal and Local regulations regarding the disposal and destruction of this material are followed.

##### B) Contaminated Packaging

Dispose of as above.

##### C) Other Considerations

Product is not to be disposed of in sanitary sewers, storm sewers, or landfills.

### **14. TRANSPORT INFORMATION**

#### 14.1 UN Number

DOT (US): N/A

IATA: N/A

IMDG: N/A

ADR/RID: N/A

#### 14.2 UN Proper Shipping Name

DOT (US)/IATA:

Not dangerous goods.

IMDG/ARD/RID:

Not dangerous goods.

#### 14.3 Transport Hazard Class(es)

DOT (US): N/A

IATA: N/A

IMDG: N/A

ADR/RID: N/A

#### 14.4 Packing Group

DOT (US): N/A

IATA: N/A

IMDG: N/A

ADR/RID: N/A

#### 14.5 Environmental Hazards

DOT (US): None

IATA: None

IMDG: None

ADR/RID: None

#### 14.6 Special Precautions for User

None

### **15. REGULATORY INFORMATION**

This safety data sheet complies with the requirements of WHMIS (Canada), OSHA 1910.1200 (US), and EU Regulation EC No. 1907/2006 (European Union).

#### 15.1 Safety, Health and Environmental Regulations/Legislation Specific for the Substance or Mixture

##### A) Canada

DSL/NDSL Status: This product is not listed on the Canadian DSL/NDSL.

##### B) United States

TSCA Status: This product is not listed on the US EPA TSCA.

##### C) European Union

ECHA Status: This product is not registered with the EU ECHA.

#### 15.2 Chemical Safety Assessment

No data available

### **16. OTHER INFORMATION**

#### 16.1 Revision History

Original Publication Date: N/A

#### 16.2 List of Abbreviations

LD50	Median lethal dose of a substance required to kill 50% of a test population.
LC50	Medial lethal concentration of a substance required to kill 50% of a test population.
LDLo	Lowest known lethal dose
TDLo	Lowest known toxic dose
IARC	International Agency for Research on Cancer
NTP	National Toxicology Program
RTECS	Registry of Toxic Effects of Chemical Substances

### **16.3 Further Information**

Copyright 2015. Copies may be made for internal use only. The above information is believed to be correct to the best of our knowledge, but is to be only used as a guide. To the best of our knowledge, the chemical, physical, and toxicological properties have not been thoroughly investigated. Please take all due care when handling this product.

#### **Disclaimer**

**The Final Document will be available at the time of consignment.**

**# Can vary as per company.**

**End of Safety Data Sheet.**

DRAFT